



BETA KİMYA
SANAYİ ve TİCARET A.Ş.

mitreapel® **apel tutkal®**

Perfect Bonding, Perfect Result



PRODUCT CATALOGUE



www.betakimya.com.tr



OUR CERTIFICATES

PVAc. GLUES

7-14

EDGEBANDING GLUES

15-24

PU ADHESIVES

25-28

INSTANT ADHESIVES

29-32

SILICONES & SEALANTS & ADHESIVES

33-38

HYBRID ADHESIVES

39-42

PU FOAMS

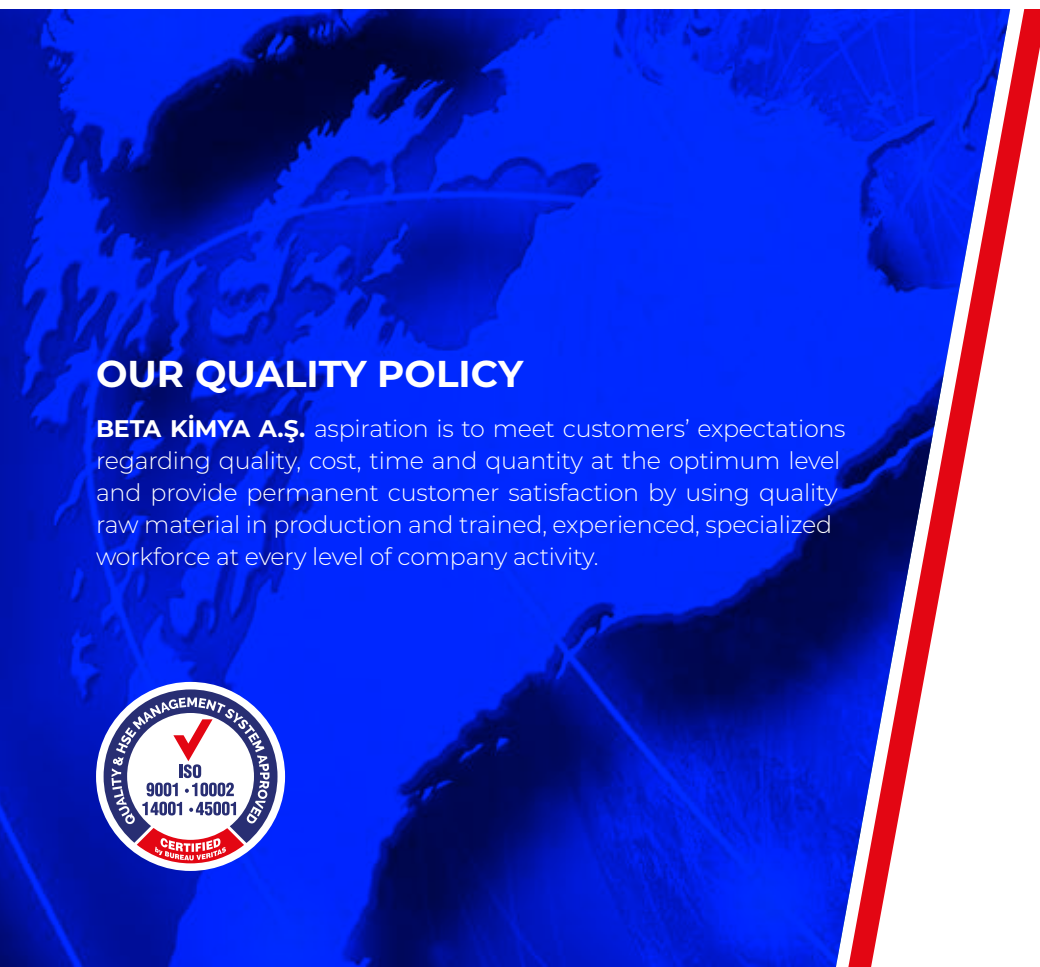
43-48

TECHNICAL AEROSOLS

49-54

PUR REACTIVE HOTMELT ADHESIVES

55-60



OUR QUALITY POLICY

BETA KİMYA A.Ş. aspiration is to meet customers' expectations regarding quality, cost, time and quantity at the optimum level and provide permanent customer satisfaction by using quality raw material in production and trained, experienced, specialized workforce at every level of company activity.





ABOUT US

BETA Kimya A.Ş., which was founded in 1987, promoted its first steps into the adhesive industry, with the production of furniture manufacturing glues. BETA Kimya A.Ş. that permanently adds value to the chemicals sector, pursued fast growth with its generic brands Apel and Mitreapel and with the efforts of its more than 250 people's work force, it succeeded in enlarging its current product family with more than 100 different products.

In 2007 BETA Kimya A.Ş. commissioned the production facilities founded at Tuzla with investments in advanced technology and started up the production of new generation adhesives and chemicals intended for the wooden and construction industries. The increase in the production capacity was accompanied by additional investments which resulted in opening a Research and Development laboratory inside these facilities. This laboratory, entirely operated by Turkish engineers, succeeded to get the R&D Center Certificate in 2019. By developing the Antibacterial Spray and the Liquid Hand Disinfectants at this center, BETA Kimya A.S. lately managed its introduction in the healthcare sector.

After the establishment of the production facilities at Tuzla in 2010 where BETA Kimya A.Ş. started producing polyurethane based adhesives and filling materials, it opened two more plants successively in 2013 and 2016, increasing its production capacity to 4 production units. Expanding its foreign trade from mainly the neighboring countries to Europe, Asia, Middle East and the Asia- Pacific area, it has been exporting to 90 countries since 1922. Mitreapel, one of the generic brands of the Turkish chemicals industry exports, was certified as "Well- known Brand" in 2020 by the Turkish Patent and Trademark Office.

BETA Kimya A.Ş., one of the prestigious and high brand value establishments of the sector, is presently one of the companies which make the highest R&D investments in Turkey.

BETA Kimya A.Ş., perseveringly adding value to the Turkish chemicals industry, has been continuing its global target-oriented investments with its hundred percent domestic capital and vigorous company structure and in 2020 it founded BETA Kimya A.Ş. Gebkim Campus, the biggest adhesives production facilities in the Eastern Europe and the Middle- East, operating at full capacity since 2022.

OUR VISION

Our vision is to become a leading, trustworthy and exemplary company at both national and international level by providing sustainability in product quality and service concept through integrating the modern production systems and knowledge with qualified labor, by grounding on unconditional customer satisfaction, by benefiting the environment and community with a sense of deep responsibility, by developing and advancing continuously towards the same goal together with our domestic and foreign customers and suppliers.

OUR MISSION

Our mission as a contemporary, respectable and trustworthy company is to increase our sales in the domestic as well as in the foreign markets by prioritizing customer satisfaction, to sustain our ethical and moral values without compromising our quality and service mentality, to consolidate our brand awareness through the approach of continuous development and change and, while achieving all these, to create employment opportunities and benefit the environment and community.

OUR VALUES

Customer Orientation | Commitment to our Values | Sustainable Growth
Operational Perfection | Powerful Human Resource | Ethical attitude | Innovativeness

mitreapel[®]

INSTANT ADHESIVE KIT

adhesive activator

SUPERHEROES OF GLUING PROCESSES



cianoacrylate adhesive

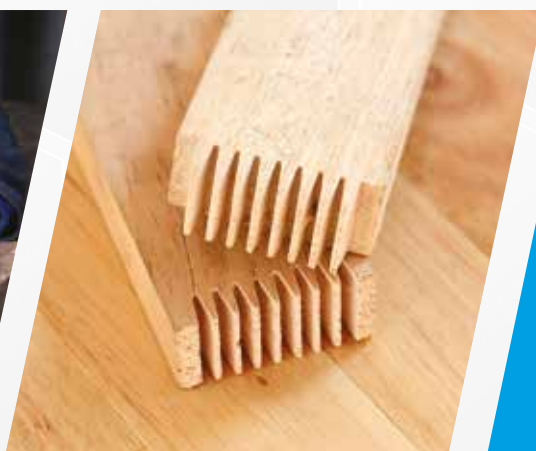


www.betakimya.com.tr

5
SECONDS
LIKE A STONE

mitreapel® **apel tutkal®**

Perfect Bonding, Perfect Result



PVAC. GLUES

■ WOOD APPLICATION & CHAIR GLUE

CW100



Apel D3/ D4 Wooden Applications & Chair Glue is a water based PVAc glue with high adhesive power, at norm D3 according to the DIN EN 204 standards, formulated especially to be used by professionals and high-quality pursuers for any kinds of wooden gluing applications and in the production of wooden chairs. When it is used in combination with 5 % APEL Hardener it passes to norm D4.

SPECIFICATIONS

- It has low / medium viscosity.
- Medium open time.
- It becomes transparent when it is cured.
- It is at norm D3 according to the DIN 204 standard.
(when used with 5% APEL Hardener it passes to norm D4)
- It is fast curing.

APPLICATION AREAS

It is used for bonding all kinds of massive wooden materials, for producing wooden chairs, for providing flexibility and resistance at the joining points, in the press process of wooden door frames and panels, for laminating the wooden materials, MDF and chipboards.



PACKAGING	COLOR	BOX	PALLET
30 kg Bucket	Transparent	-	27 Pcs.
IBC Tank / kg		-	-

■ SUPERIOR WOOD GLUE

WG300



WG 300 Super Wood Glue is a water-based emulsion PVAc glue with high adhesive power which becomes transparent after drying. It is a homopolymer glue that can be used to bond the wooden massive materials even when their humidity level is high.

SPECIFICATIONS

- It has medium viscosity.
- It becomes transparent when it is cured.
- It is at norm D3 according to the DIN 204 standard.
- It provides perfect adhesion even for hard wood with high humidity.
- It is resistant to humidity and heat.
- It contains special protective substances against mold and bacteria.

APPLICATION AREAS

It is used for bonding the furniture nonmobile connection parts, in the automatic finger joint machinery operations, for manufacturing door frames and panels to produce wooden doors, for producing furniture and for bonding of all kinds of wooden materials, for laminating wooden materials, MDF and chipboard, for producing frames for tables, stools and nesting coffee tables



PACKAGING	COLOR	BOX	PALLET
25 kg Bucket	Transparent	-	27 Pcs.
IBC Tank / kg		-	-

■ D3 SUPER TRANSPARENT WOOD GLUE

WG100



Apel D3 Super Wooden Frame Glue is a water-based PVAc emulsion glue with superior adhesive power at norm D3 that becomes transparent after drying. It is an adhesive with homopolymer structure that can be used to bond the massive wooden parts even if they have a high level of humidity.

SPECIFICATIONS

- It has medium viscosity.
- It becomes transparent when it is cured.
- It is at norm D3 according to the DIN 204 standard.
- It does not contain formaldehyde.
- It provides perfect adhesion even for hard wood with high humidity.
- It is resistant to humidity and heat.
- It contains special protective substances against mold and bacteria.

APPLICATION AREAS

It is used for the side and vertical bonding process in the massive wooden panel manufacturing, for manufacturing wooden chair frames, for the automatic finger joint machinery operations, for manufacturing door frames and panels to produce wooden doors, for producing furniture and for bonding all kinds of wooden materials, for laminating wooden materials, MDF and chipboard.



PACKAGING	COLOR	BOX	PALLET
50 kg Barrel	Transparent	-	18 Pcs.
25 kg Bucket		-	27 Pcs.
10 kg Bucket		-	64 Pcs.
4 kg Bucket		4 Pcs.	30 Box
1 kg Bucket		12 Pcs.	50 Box
IBC Tank / kg		-	-

■ D3 TRANSPARENT WOOD GLUE

WG90



Apel D3 Wooden Frame Glue is a water-based PVAc emulsion glue with high adhesive power at norm D3, that becomes transparent after curing. It is an adhesive with homopolymer structure that can be used to bond the massive wooden parts even if they have a high level of humidity.

SPECIFICATIONS

- It has low / medium viscosity.
- It becomes transparent when it is cured.
- It is at norm D3 according to the DIN 204 standard.
- It provides perfect adhesion even for hard wood with high humidity.
- It is resistant to humidity and heat.
- It does not contain formaldehyde.
- It contains special protective substances against mold and bacteria.

APPLICATION AREAS

It is used for bonding the furniture nonmobile connection parts, in the automatic finger joint machinery operations, for manufacturing door frames and panels to produce wooden doors, for producing furniture and for bonding of all kinds of wooden materials, for laminating wooden materials, MDF and chipboard, for producing frames for tables, stools and nesting coffee tables.



PACKAGING	COLOR	BOX	PALLET
50 kg Barrel	Transparent	-	18 Pcs.
25 kg Bucket		-	27 Pcs.
10 kg Bucket		-	80 Pcs.
4 kg Bucket		4 Pcs.	30 Box
1 kg Bucket		12 Pcs.	50 Box
700 g Tube		24 Pcs.	50 Box
IBC Tank / kg	-	-	

■ D3 TRANSPARENT GLUE

T1000



D3 is a water based PVAc homopolymer glue, with high adhesive power, basic for wood applications, which becomes transparent after drying due to its unfilled structure and which can be used for interior woodworks.

SPECIFICATIONS

- It has low / medium viscosity.
- It becomes transparent when it is cured.
- It contains special protective substances against mold and bacteria.
- It is economical.

APPLICATION AREAS

It is used for bonding the furniture nonmobile connection parts, for manufacturing door frames and panels to produce wooden doors, for producing furniture and for bonding all kinds of wooden materials, for laminating MDF and chipboard.



PACKAGING	COLOR	BOX	PALLET
50 kg Bucket	Transparent	-	18 Pcs.
25 kg Bucket		-	27 Pcs.
10 kg Bucket		-	64 Pcs.
4 kg Bucket		4 Pcs.	30 Box
IBC Tank / kg		-	-

■ MDF PROFILE GLUE

WG150



Apel MDF Profile Glue is a PVAc based emulsion glue at norm D3 with superior adhesive power, which becomes transparent after drying. It is a homopolymer structured glue that can be used to bond massive wooden parts even with high humidity. It was especially designed to be used at the dovetailing machines.

SPECIFICATIONS

- According to the DIN EN 204 Standard it is at norm D3.
- It becomes transparent after drying.
- It has medium/ high viscosity.
- It is water-based.

APPLICATION AREAS

It is used for side and vertical bonding in the production of massive panels, for producing wooden chair frames, for furniture manufacturing and all kinds of wood bonding, for profile bonding at the dovetailing machines.



PACKAGING	COLOR	BOX	PALLET
600 g / 700 ml Tube	Transparent	20 Pcs.	60 Box

■ LAMINATE SURFACE GLUE

BK60



APEL Laminat Surface Glue is a cold and hot press glue with high adhesive power and drying capacity, which penetrates easily the application surface due to its tiny particles in emulsion state. The glue forms a hasty film layer with a specific hardness. After bonding, even at high temperature it does not peel off. It contains protectives against bacterial spoilage and mold. It has a specific smell, light and non- toxic.

SPECIFICATIONS

- Low / medium viscosity.
- When cured, it forms a hasty transparent film layer.
- According to the DIN EN 204 standard it is at norm D2.
- Resistant to humidity and high temperature.
- It contains protectives against mold and bacteria.

APPLICATION AREAS

It is used for bonding the laminate paper of various thicknesses to MDF, chipboard and massive surfaces under hot press. It can be used to produce laminate flooring and laminated kitchen tops.



PACKAGING	COLOR	BOX	PALLET
30 kg Bucket	Semi Transparent	-	27 Pcs.
IBC Tank / kg		-	-

■ POSTFORMING GLUE

BK180



APEL Postforming glue is a water-based PVAc glue used for bonding the laminate papers to surfaces such as particle boards and MDF. This glue can be efficiently used for the postforming of elbow (round) surfaces because it maintains its properties even at very high temperatures. It does not peel off the surface it has adhered to even at the high temperatures of different applications such as machinery and presses, etc. used for furniture manufacturing, it does not turn yellow and does not cause tarnish or burning, it possesses very high resistance to whatever would affect negatively the bonded surfaces.

SPECIFICATIONS

- When cured, it forms a half- transparent layer.
- It does not peel off at high temperature applications.
- When applied, it does not fade or tarnish.
- It is highly resistant in very high temperature press applications.
- It contains special protectors against mold and bacteria.

APPLICATION AREAS

It is used in the high temperature bonding process (postforming) of the laminating papers to the surface of materials such as chipboards and MDF and to the elbow (round) surfaces. It is suitable for roller press applications.



PACKAGING	COLOR	BOX	PALLET
28 kg Bucket	Semi Transparent	-	27 Pcs.

■ SUPER EXTRA WHITE GLUE

WG200



APEL Super Extra White/ Thick Glue is a PVAc based homopolymer glue intended for general use, which can be efficiently used for bonding wood, parquet, massive parts, some paper products and furthermore, for filling purposes. It provides strong adhesion by penetrating fastly the application surface. It contains protectors against bacterial spoilage and mold.

SPECIFICATIONS

- Medium viscosity.
- When cured, it forms a slightly hasty white/ pink film layer.
- According to the DIN EN 204 standard it is at norm D2.
- It contains protectors against bacterial spoilage and mold.
- Fast curing.
- It provides two color alternatives, pink and white.

APPLICATION AREAS

It is quite suitable for bonding materials such as massive wood, chipboard and MDF by cold pressing and clamping. It can also be used for all kinds of furniture repair. It is very suitable to produce wooden molds.



PACKAGING	COLOR	BOX	PALLET
28 kg Bucket	White	-	27 Pcs.

■ SUPER "WHITE / MASSIVE" GLUE

WG201 - WG202



It is a PVAc based homopolymer glue intended for general use, that can be used for bonding wood, parquet and massive wooden parts, as well as for filling purposes. Provides strong bonding by rapidly penetrating the application surface. It forms a solid and white film layer. It contains protectors against bacterial spoilage and mold.

SPECIFICATIONS

- Low / medium viscosity.
- When cured, it forms a white / pink film layer.
- According to the DIN EN 204 standard it is at norm D2.
- It contains protectors against bacterial spoilage and mold.
- It provides two color alternatives, pink and white.

APPLICATION AREAS

It is quite suitable for bonding materials such as massive wood, chipboard and MDF by cold pressing and clamping. It can also be used for all kinds of furniture repairs. It is very suitable for producing wooden molds. It is recommended for the cold press MDF thickening process in the production of shoe heels.



○ WG201 - Super White Glue

PACKAGING	COLOR	BOX	PALLET
28 kg Bucket	White	-	27 Pcs.
25 kg Bucket		-	27 Pcs.
10 kg Bucket		-	64 Pcs.
4 kg Bucket		4 Pcs.	30 Box
750 g Tube		24 Pcs.	32 Box
IBC Tank / kg		-	-

● WG202 - Super Massive Glue

PACKAGING	COLOR	BOX	PALLET
25 kg Bucket	Pink	-	27 Pcs.

■ WHITE GLUE

WG203



Apel WG203 is a homopolymer PVAc-based adhesive used for general-purpose bonding of wood, parquet, and solid wood products, and suitable for filling applications. It penetrates the surfaces to be bonded, providing strong adhesion. It forms a durable white film layer. Contains protective agents against bacteriological and mold.

SPECIFICATIONS

- Low / medium viscosity.
- Forms a white film layer upon curing.
- Classified as D2 according to DIN EN 204.
- Contains special protective substances against mold and bacteria.

APPLICATION AREAS

It is highly suitable for bonding solid wood, chipboard, and MDF materials to each other by cold press and clamping methods. It can be used in all kinds of furniture repair works. Extremely suitable for wooden mold production. Recommended for thickening MDF by cold press in shoe heel manufacturing.



PACKAGING	COLOR	BOX	PALLET
25 kg Bucket	White	-	27 Pcs.
IBC Tank / kg		-	-

■ MASSIVE PARQUET GLUE

WG205



It is a PVAc based homopolymer glue intended for general use, that can be used for bonding wood, parquet and massive wooden parts, as well as for filling purposes. Provides strong bonding by rapidly penetrating the application surface. It forms a solid and white film layer. It contains protectants against bacterial spoilage and mold.

SPECIFICATIONS

- High / medium viscosity
- When cured, it forms a pink film layer
- It contains protectors against bacterial spoilage and mold
- Due to its ideal open time, it is perfect for the application of massive parquet flooring.

APPLICATION AREAS

It is ideal for the application of massive parquet to the coated or uncoated ground. It is ideal for bonding works. It can be used for the clamp and cold press bonding of wooden materials.



PACKAGING	COLOR	BOX	PALLET
28 kg Bucket	Pink	-	27 Pcs.
10 kg Bucket		-	64 Pcs.

■ ADDITIVE GLUE

WG206



APEL Additive Glue is a PVAc based homopolymer glue for general use which can be used for bonding MDF, chipboards and massive wooden parts and furthermore for filling purposes. It forms a white film layer. It contains protectors against bacterial spoilage and mold.

SPECIFICATIONS

- Medium / high viscosity.
- When cured, it forms a white film layer.
- According to the DIN EN 204 standard it is at norm D2.
- It contains protectors against bacterial spoilage and mold.
- It is economical.

APPLICATION AREAS

It is quite suitable for bonding materials such as massive wood, chipboard and MDF by cold pressing. It can also be used for all kinds of furniture repairs. It is also used for wall painting by mixing it in a certain proportion with the water-based wall paints to increase its adherence and consistency.



PACKAGING	COLOR	BOX	PALLET
28 kg Bucket	White	-	27 Pcs.
10 kg Bucket		-	64 Pcs.
4 kg Bucket		4 Pcs.	30 Box
500 g Bucket		30 Pcs.	50 Box
750 g Tube		24 Pcs.	32 Box
IBC Tank / kg		-	-

■ WOOD & HOBBY GLUE

HG100



Apel Wood and Hobby Glue is a water based PVAc glue at norm D3, with superior bonding power. It can be easily used for any wooden, fabric, paper hobby and DIY applications. After drying, it forms solid, transparent and elastic film layer resistant to humidity.

SPECIFICATIONS

- Low viscosity.
- Transparent after drying.
- According to the DIN EN 204 standard it is at norm D3.
- Water resistant.
- Humidity and heat resistant.
- Non- hazardous for human health.
- Odorless.

APPLICATION AREAS

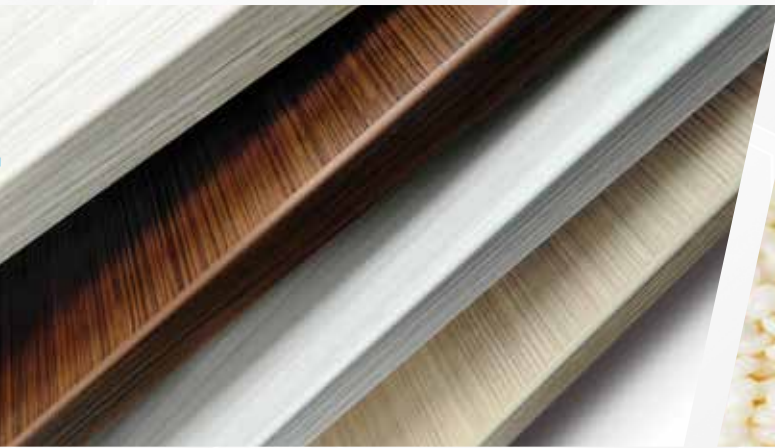
It is successfully used for toy manufacturing, homework, handicraft, slime making, mockup and model making, project designs and applications, bonding of uneven surfaces such as paper, MDF, chipboard, leather, perforated cork, etc



PACKAGING	COLOR	BOX	PALLET
100 g Tube	Transparent	96 Pcs.	36 Pcs.

mitreapel® apel tutkal®

Perfect Bonding, Perfect Result



EDGEBANDING GLUES



SCAN TO WATCH
THE HOW-TO VIDEO.



HIGH QUALITY

SUITABLE FOR FAST MACHINES

HIGH STRENGTH

Apel BK 522 glue is an EVA based, edge banding hotmelt glue with fast and strong adhesive power, developed for high and medium speed machinery. Trial is definitely required before bonding acrylic edge bandings. BK 522 has a medium/ high viscosity. It is the ideal glue for high performance. The optimum application temperatures are between 180-200 °C.

SPECIFICATIONS

- Medium / high viscosity
- Its high quality provides excellent bonding strength
- White / natural color
- Ideal for roller machines applications
- High temperature and machinery speed tolerance values

APPLICATION AREAS

It is used for bonding PVC, ABS, melamine, laminate, massive edge bandings to panel sheets such as MDF, chipboard, on the automatic edge banding machines.

PACKAGING	COLOR	BOX	PALLET
25 kg Bucket	White	-	27 Pcs.
25 kg Pack		-	25 Pcs.



■ EDGEBANDING GLUE

BK509 / BK510



Apel BK509 and BK510 are EVA based yellowish transparent and white transparent edge banding glues, developed especially for the unfilled, medium and high-speed edge banding machinery, with low/ medium viscosity, with crystal granule structure and which do not leave glue traces at the edge of the panel. They are recommended for high metric performance and quality. Their resistance to very high temperatures and humidity is remarkable. They preserve the peeling off resistance even under difficult circumstances.

SPECIFICATIONS

- They are suitable for high-speed machinery (>18 m/min).
- They are available as yellowish transparent (BK 510) and whitish transparent (BK 509).
- They are ideal for rollers and some nozzle slot glue application machines.
- Low consumption level.
- They have high temperature and solvent tolerance values.

APPLICATION AREAS

They are used for bonding PVC, ABS, melamine, laminate, and massive edge bandings to panel sheets such as MDF, chipboard, and on the automatic edge banding machines.



PACKAGING	COLOR	BOX	PALLET
20 kg Bucket	White	-	27 Pcs.

■ EDGEBANDING GLUE

BK511



Apel BK511 is an EVA based edge banding glue, developed especially for the medium / high speed edge banding machinery, with high viscosity, low filling proportion, that becomes transparent after drying. It is used for bonding PVC, ABS, melamine, laminate, massive edge bandings to MDF, chipboards or massive wooden panels. It is recommended for high metric performance and quality. Their resistance to very high temperatures and humidity is remarkable. It does not peel off even under difficult conditions.

SPECIFICATIONS

- Suitable for high-speed machinery (>18 m/min).
- Available in white color (becomes transparent after drying).
- Ideal for roller glue application machinery.
- Resistant to high temperatures.
- Low consumption level.
- It has high temperature tolerance values.
- It is suitable for the skirting machines.

APPLICATION AREAS

It is used for bonding PVC, ABS, melamine, laminate, and massive edge bandings to panel sheets such as MDF, chipboard, and on the automatic edge banding machines.



PACKAGING	COLOR	BOX	PALLET
20 kg Bucket	White	-	27 Pcs.



SCAN TO WATCH
THE HOW-TO VIDEO.



ECONOMIC

SUITABLE FOR SLOW MACHINES

STRONG BONDING

Apel BK539 is an EVA based, medium viscosity edge banding glue developed especially for the low and medium speed edge banding machinery. It is used for bonding PVC, melamine, ABS edge bandings to MDF, chipboard or massive wooden panels. It is not recommended for the acrylic edge bandings.

SPECIFICATIONS

- It is suitable for slow (low functioning speed) machines (8 -12 m/min).
- Its color is natural.
- It is ideal for roller glueing machines.
- It has ideal temperature resistance.
- It is economical.

APPLICATION AREAS

It is used for bonding PVC, melamine, laminate, and massive edge bandings to panel sheets such as MDF and chipboard on the low and medium speed automatic edge banding machines.

PACKAGING	COLOR	BOX	PALLET
25 kg Bucket	White	-	27 Pcs.
25 kg Pack		-	25 Pcs.



■ EDGEBANDING GLUE

BK528



Apel BK528 is an EVA based, natural color, high/ medium viscosity edge banding glue developed especially for the medium speed edge banding machinery. It is used for bonding PVC, melamine, ABS edge bandings to MDF, chipboard or massive wooden panels. It is not recommended for the acrylic edge bandings. It is an ideal product from the price/ performance point of view.

SPECIFICATIONS

- It is suitable for the medium speed machines (12 -18 m/min).
- Its color is natural.
- It is ideal for roller glueing machines.
- It is resistant to high temperatures.
- It has high tolerance values.
- The optimum operating temperature is 180-200 °C.

APPLICATION AREAS

It is used for bonding PVC, ABS, melamine, laminate, and massive edge bandings to panel sheets such as MDF and chipboard on the automatic edge banding machines.



PACKAGING	COLOR	BOX	PALLET
25 kg Bucket	White	-	27 Pcs.
25 kg Pack		-	25 Pcs.

■ EDGEBANDING GLUE

BK533



Apel BK533 is an EVA based, natural color, low/ medium viscosity edge banding glue developed especially for the low/ medium speed edge banding machinery. It is used for bonding PVC, melamine, ABS edge bandings to MDF, chipboard or massive wooden panels. It is not recommended for the acrylic edge bandings. It is an ideal product from the price/ performance point of view.

SPECIFICATIONS

- It is suitable for the medium/ low speed machines (8 -15 m/min).
- Its color is natural/ dark walnut.
- It is ideal for roller glueing machines.
- It is resistant to high temperatures.
- The optimum operating temperature is 180-200°C.

APPLICATION AREAS

It is used for bonding PVC, ABS, melamine, laminate, and massive edge bandings to panel sheets such as MDF and chipboard.



PACKAGING	COLOR	BOX	PALLET
25 kg Bucket	White	-	27 Pcs.
20 kg Bucket		-	27 Pcs.
25 kg Pack		-	25 Pcs.

EVA HOTMELT SPE

SPECIFICATIONS	BK 509	BK 511	BK 522	BK 528
COLOR	Semi Transparent	White - Semi Transparent when cured	Natural White	Brown Grey Natural
VISCOSITY RANGE (mpA.s)	53.750	105.000	100.000	96.000
SOFTENING POINT	95.0 °C	108.0 °C	104.0 °C	102.0 °C
MACHINE SPEED	Mid (12-18 m/min) or High (18-25 m/min)	High (18-25 m/min)	High (18-25 m/min)	Mid (12-18m/min)
APPLICATION TEMPERATURE	180-200°C	180-200°C	180-200°C	180-200°C
APPLICATION AREA	Edge Banding	Door Frame(*) / Edge Banding	Edge Banding	Edge Banding
USAGE AREA	PVC, ABS, Polyester, Melamine, Laminate and Massive Edge Banding Applications	PVC, ABS, Polyester, Melamine, Acrylic, Laminate and Massive Edge Banding Applications	PVC, ABS, Polyester, Melamine, Laminate and Massive Edge Banding Applications / Testing for Acrylic	PVC, ABS, Polyester, Melamine, Laminate and Massive Edge Banding Applications

(*) You should be careful while using these products on lacquer edges. Solvent of lacquer paint can cause eroding. It is recommended to test before using. Can be used for coated edges.

(**) The information contained herein is average data and may vary depending on the materials used and user experience.

IFICATIONS

BK 533	BK 538	BK 539	BK 611	BK 622
Brown Grey Natural	Brown Grey Black Natural	Brown Grey Black Natural	Cream	Brown White
65.000	65.000	60.000	45.000 (140°C)	70.000
100.0 °C	102.0 °C	99.0 °C	85.0 °C	85.0 °C
Low (8 -12 m/min)	Low (8 -12 m/min)	Low (8 -12 m/min)	Low (8 -12 m/min)	Low (8 -12 m/min)
180-200°C	180-200°C	180-200°C	140-150°C	120-140°C
Edge Banding	Edge Banding	Edge Banding	Edge Banding- Low Temp.	Edge Banding- Low Temp.
PVC, Polyester, Melamine, Laminate and Massive Edge Banding Applications	PVC, Polyester, Melamine, Laminate and Massive Edge Banding Applications	PVC, Polyester, Melamine, Laminate and Massive Edge Banding Applications	PVC, ABS, Polyester, Melamine, Laminate and Massive Edge Banding Applications	PVC, ABS, Polyester, Melamine, Laminate and Massive Edge Banding Applications

■ EDGEBANDING GLUE

BK538



Apel BK538 is an EVA based, medium viscosity edge banding glue developed especially for the low and medium speed edge banding machinery. It is used for bonding massive wooden, PVC, melamine, ABS edge bandings to the MDF, chipboard or massive wooden panels. It is not recommended for the acrylic edge bandings.

SPECIFICATIONS

- It is suitable for low-speed machines (8-12 m/min).
- Its color is natural.
- It is ideal for roller glueing machines.
- It has ideal resistance to heat.
- It is economical.
- The optimum operating temperature is 180-200°C.

APPLICATION AREAS

It is used for bonding PVC, melamine, laminate, and massive edge bandings to the edges of panel sheets such as MDF and chipboard on the automatic edge banding machines.



PACKAGING	COLOR	BOX	PALLET
25 kg Bucket	White	-	27 Pcs.
25 kg Pack		-	25 Pcs.

■ LOW-TEMP HOTMELT ADHESIVE

BK611



Apel BK611 is an EVA based, low viscosity edge banding glue formulated especially for the edge banding machines functioning at low speed and temperatures and for the curved edge panels without linear edges. It is used for bonding the massive wooden, PVC, melamine, ABS edge bandings to the curved and flat MDF, chipboard or massive wooden panels. It is very ideal for manual applications due to its long open time and low application temperature.

SPECIFICATIONS

- It is ideal for curved edge banding applications.
- It is suitable for low-speed manual machines (8-12 m/min).
- The color is natural/ white.
- It is resistant to high temperatures.
- It has a long open time.
- It is suitable for manually operated machines.
- The optimum functioning temperature is 140-160°C.

APPLICATION AREAS

It is used for bonding PVC, abs, melamine, laminate, and massive edge bandings to the curved surfaces of the MDF, chipboard and massive panel edges on the automatic and manual edge banding machines.



PACKAGING	COLOR	BOX	PALLET
20 kg Bucket	White	-	27 Pcs.
25 kg Pack		-	25 Pcs.

■ EDGEBANDING GLUE

BK622



Apel BK 622 is an EVA based, low viscosity glue with a granule structure, produced from high quality synthetic resins, formulated especially for the machines functioning at low temperature and/ or the automatic edge banding machines functioning at low speed.

SPECIFICATIONS

- Natural/ light walnut color
- It is ideal for roller glueing machines.
- It provides perfect adherence
- The optimum functioning temperature is 120-140°C.

APPLICATION AREAS

It is used for bonding PVC, polyester and massive edge bandings to the edges of MDF and chipboard panels on the automatic edge banding machines.



PACKAGING	COLOR	BOX	PALLET
20 kg Bucket	White	-	27 Pcs.
25 kg Pack		-	25 Pcs.

■ HOTMELT STICK

HS100



Apel Hotmelt Stick is a synthetic resin based, high viscosity, half transparent hot-melt glue with thermoplastic characteristics intended for general use.

SPECIFICATIONS

- Developed especially for paper and fabric surfaces.
- Ideal for wood, metal, fabric, leather and cardboard.
- Preferable for fast adhesion needs.
- Environmentally friendly.
- Fast first adhesion.
- Gap filling.
- Odorless.
- Easy to use.

APPLICATION AREAS

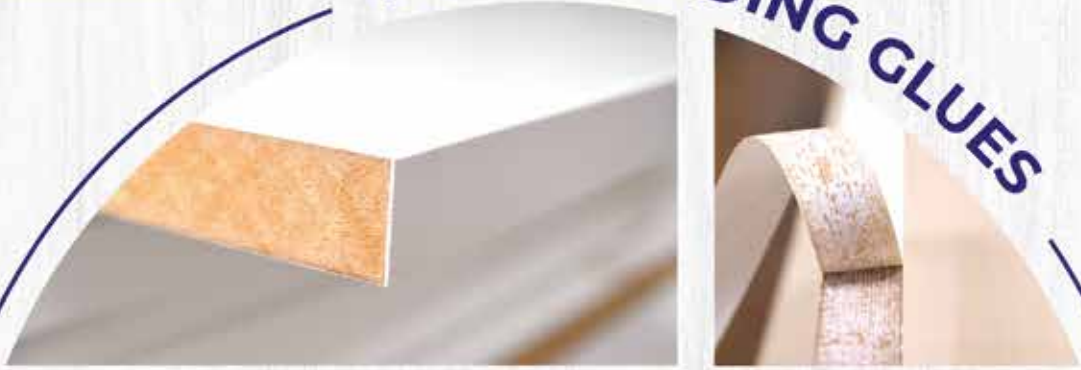
It is used for wood, metal, plastic (like PVC, etc.), fabric leather, synthetic materials, cardboard coating, furniture repairs, frame assembling.



PACKAGING	COLOR	BOX	PALLET
1 kg Box	Transparent	20 Pcs.	32 Box

apel

EDGEBANDING GLUES



**HIDDEN HEROES OF
PERFECT DETAILS**



www.betakimya.com.tr

mitreapel® **apel tutkal®**

Perfect Bonding, Perfect Result



PU ADHESIVES



SCAN TO WATCH
THE HOW-TO VIDEO.



Apel Assembly Kit (liquid nail) is a single component, polyurethane based bonding material that provides curing with the environment air and humidity and can bond to each other most of the construction materials of different kinds. When curing is completed, it forms a solid and strong structure.

SPECIFICATIONS

- It has a short press time (~15 min).
- It is transparent in color.
- It is fast curing.
- It is thixotropic, it does not flow down on vertical surfaces.
- It is easily applicable.
- It can bond many materials of different kinds.
- It is economical from the price/ performance point of view.
- According to the DIN EN 204 standard it is at norm D4.
- It is not affected by water, humidity and heat.
- It does not contain solvents and volatile gases.
- It has the capacity to fill the gaps.

APPLICATION AREAS

It is used for all kinds of furniture, yacht, boat construction, exterior landscape and repair works where bonding of different materials such as wood, glass, metal, plastic, mirror, brick, MDF to the wooden surfaces is required.

PACKAGING	COLOR	BOX	PALLET
390 g Cartridge	Transparent	30 Pcs.	96 Box
50 ml Blister		30 Pcs.	96 Box



■ PU MARINE GLUE

PA300



Apel Marin is preferred by the users who pursue high performance in superior bonding capacity and water resistance terms. Polyurethane based Apel Marin which is cured in contact with the humidity of the air, is ideal for bonding the wooden material with different kinds of materials. After this product, which does not contain any solvents, is pressed for 2 hours, the material becomes suitable for sanding and trimming. After 24 hours the final curing is completed and provides excellent bonding. It is used in the furniture, boat and yacht construction and wood industry.

SPECIFICATIONS

- It can bond a lot of materials of different kinds.
- It is economical from the price/ performance point of view.
- According to the DIN EN 204 standard it is at norm D4.
- It is not affected by water, humidity and heat.
- It does not contain solvents and volatile gases.
- It has the capacity to fill the gaps.

APPLICATION AREAS

It is used for all kinds of furniture, yacht, boat construction, exterior landscape and repair works where bonding of different materials such as wood, glass, metal, plastic, mirror, brick, and MDF to the wooden surfaces is required.



PACKAGING	COLOR	BOX	PALLET
550 g / 600 ml Tube	Yellow (Honey)	24 Pcs.	40 Box
6 kg Plastic Jerry Can		-	112 Pcs.
IBC Tank / kg		-	-

■ EXPRESS PU MARINE GLUE

PA301



Apel Express Marine, due to its short press time, superior bonding capacity and water resistance, is preferred by the users who want high performance. Polyurethane based Apel Express Marine which is cured in contact with the humidity of the environment, is ideal for bonding the wooden material with different kinds of materials.

SPECIFICATIONS

- It has a short press time (~15 min).
- It is transparent in color.
- It is fast curing.
- It is easily applicable.
- It can bond a lot of materials of different kinds.
- According to the DIN EN 204 standard it is at norm D4.
- It is not affected by water, humidity and heat.
- It does not contain solvents and volatile gases.
- It has the capacity to fill the gaps.

APPLICATION AREAS

It is used for bonding a lot of different materials such as concrete, wood, glass, metal, plastic, rockwool, mirror glass, brick, tile with wooden materials. It is used in the furniture, yacht, boat and wooden industry.



PACKAGING	COLOR	BOX	PALLET
550 g / 600 ml Tube	Transparent	24 Pcs.	112 Box
6 kg Plastic Jerry Can		-	112 Pcs.
IBC Tank / kg		-	-

MEMBRANE GLUE 1K / 2K

PA325



Apel Membrane Press Glue is a polyurethane water- based glue, used on the automatic balloon and vacuum membrane press machines where the PVC membrane folios are bonded to the MDF materials. It has two variations, single component and double- component. When the double-component membrane press glue is mixed with 5% hardener, a higher level of heat resistance is obtained.

SPECIFICATIONS

- It can be easily used with the glue gun.
- It surely does not clog or freeze on the 1,8 – 2,2 mm gun nozzles.
- It provides excellent gap filling and surface adhesion.
- It gets ready for use 45 minutes after application.
- It has a long open time up to ~8 hours.
- Surely it does not create an orange peel view on the surfaces.
- It has high resistance to heat and humidity.

APPLICATION AREAS

It is used for producing membrane covers, panels and doors



PACKAGING	COLOR	BOX	PALLET
25 kg Plastic Jerry Can	White	-	24 Pcs.
10 kg Plastic Jerry Can	White	-	60 Pcs.

MITREAPEL MEMBRANE GLUE 1K / 2K

PA326



Mitreapel Membrane Press Glue is a polyurethane water- based dispersion glue applied by gun and used on the membrane press or vacuum press machines. It is used to bond the PVC membrane foils to the MDF surfaces under heat and pressure.

SPECIFICATIONS

- It can be easily used with the glue gun.
- It surely does not clog or freeze on the 2,0 – 4,0 mm gun nozzles.
- It provides excellent gap filling and surface adhesion.
- It gets ready for use 45 minutes after application.
- It has a long open time up to ~8 hours.
- Surely it does not create an orange peel view on the surfaces.
- It has high resistance to heat and humidity.

APPLICATION AREAS

It is used for producing membrane covers, panels and doors.



PACKAGING	COLOR	BOX	PALLET
10 kg Plastic Jerry Can	White	-	100 Pcs.

mitreapel® **apel tutkal®**

Perfect Bonding, Perfect Result



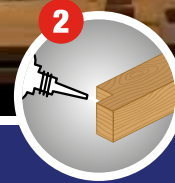
INSTANT ADHESIVES



SCAN TO WATCH
THE HOW-TO VIDEO.



1 Spray the activator onto one of the surfaces to be adhered and wait for it to evaporate.



2 Apply cyanoacrylate glue to the other surface by applying 2-3 drops.



3 Put the pieces together and wait at least 12 seconds.

Mitreapel Instant Adhesive is a two-component and very strong adhesive. It consists of a cyanoacrylate based adhesive and an activator spray that provides fast drying. It can be easily used for all kinds of bonding in various application fields. Just a few drops are sufficient to bond the surfaces in seconds.

SPECIFICATIONS

- It provides adhesion in a few seconds when applied with the Mitreapel Activator.
- Very fast curing (3 – 12 seconds).
- Excellent adherence and bonding strength.
- Impeccable application even on vertical surfaces and absorbent surfaces due to its special fluidity formula .
- Easily applicable.

APPLICATION AREAS

In many areas where strong and fast bonding is required. Bonding of wood, rubber, plastic, leather, cork and many metallic material. It is used for repairs, renovations, mockups, demonstrations, bonding of wooden and MDF profiles, crowns, slats, accessories, etc.

PRODUCT CODE	PACKAGING	COLOR	BOX	PALLET
CA25 + AC100	25 g + 100 ml Kit	Transparent	72 Pcs.	50 Box
CA50 + AC200	50 g + 200 ml Kit		50 Pcs.	40 Box
CA100 + AC400	100 g + 400 ml Kit		25 Pcs.	49 Box
CA130 + AC500	130 g + 500 ml Kit		25 Pcs.	42 Box



■ MITREAPEL INSTANT ADHESIVE FLEX

FC100+FA400



Mitreapel Instant Adhesive Flex is a two- component, extremely strong adhesive. It consists of a cyanoacrylate based adhesive and an activator spray that provides fast drying. When compared with the regular adhesives, its special and newly developed formula increased its impact resistance and provided relative flexibility. It can be easily used for all kinds of bonding in various application fields. Just a few drops are sufficient to bond the surfaces in seconds.

SPECIFICATIONS

- It provides adhesion in a few seconds when applied with the Mitreapel Adhesive Activator.
- Very fast curing (5-12 seconds).
- Increased impact and shock resistance.
- Excellent adherence and bonding strength.
- Impeccable application even on vertical surfaces and absorbent surfaces due to its special fluidity formula .
- Easily applicable.

APPLICATION AREAS

It is used in many areas where strong and fast bonding is required. It is used for bonding wood, rubber, plastic, leather, cork and many metallic materials. It is used in a lot of bonding areas where strong and fast adhesion is required. It is used for bonding materials such as wood, rubber, plastic, leather, cork and a lot of metallic materials. It is used for repairs, renovations, mockups, demonstrations, bonding of wooden and MDF profiles, crowns, slats, accessories, etc.



PRODUCT CODE	PACKAGING	COLOR	BOX	PALLET
FC50 + FA200	50 g + 200 ml Kit	Transparent	50 Pcs.	40 Box
FC100 + FA400	100 g + 400 ml Kit		25 Pcs.	49 Box
FC125 + FA500	125 g + 500 ml Kit		25 Pcs.	42 Box

■ SUPER GLUE

BK555 - BK855



Mitreapel Super Adhesive is considerably facilitating your work due to its perfect bonding speed and power. It bonds different kinds of materials within seconds and joins them permanently. It provides a practical solution to each of your bonding needs.

SPECIFICATIONS

- Very low viscosity (BK555).
- High viscosity (BK855).
- Fast curing.
- Bonds the non- absorbent surfaces to each other within seconds.
- It displays exothermic reaction, heat is released.
- It is practical.
- It has a wide application area.

APPLICATION AREAS

It can be comfortably used for bonding in a short time different kinds of materials, for hobbies, mockups, projects, etc., for home repair works and in many other places.



PACKAGING	COLOR	BOX	PALLET
20 g Box	Transparent	96 Pcs.	100 Box
20 g Blister		96 Pcs.	100 Box
30 kg Plastic Jerry Can		-	32 Pcs.

Best for
DIY
applications



Apel WS44 Spray Adhesive is a single component, strong glue in spray form, resistant to high temperatures, fast drying and providing permanent resistance. It is in spray form, suitable for horizontal and vertical applications. Since it cures and solidifies very fast, the work can continue in a short time.

SPECIFICATIONS

- It dries and solidifies very fast.
- It has a wide application field.
- It is easy to use.
- It can be used for all materials except soft PVC and PVC films.
- Due to its special actuator, it covers the surface and provides strong adhesion.

APPLICATION AREAS

It bonds the resin impregnated melamine paper and MDF products. Due to its fast-drying transparent layer, it has the capacity to bond carpets, folios, cardboard, felt and paper with wooden, metallic and chipboard surfaces. It is used for bonding materials which require sufficient open time. On the light materials it creates a layer like tape, providing adhesion.

PACKAGING	COLOR	BOX	PALLET
500 ml Metal Can	Yellow	24 Pcs.	56 Box



mitreapel® **apel tutkal®**

Perfect Bonding, Perfect Result



SILICONES & SEALANTS & ADHESIVES

■ SILICONE SEALANT

SS700



Apel General Purpose Silicone is a filling and anti-leakage material with a wide field of application. It provides strong adhesion for many non-porous materials, including glass, carpentry, metal, tiles, parquet, PVC and general construction materials. This 100% Silicone adhesive is also a joint filling material. It provides water and wind sealing.

SPECIFICATIONS

- It is 100 % silicone.
- It has a high elongation coefficient.
- It is flexible, it does not lose flexibility after drying .
- It contains protectors against fungi and molds.
- Acetoxy curing.
- It provides excellent adherence even to glossy surfaces.
- It is not recommended for mirror glass bonding since it might cause corrosion on the backside of your mirror. You can use MG700/ MG740 Mirror glass Adhesive for this work.
- It is thixotropic, does not flow down on vertical surfaces.

APPLICATION AREAS

It can be used for glass assembling jobs, as filling material on tile edges and joints, for providing water sealing in the wash- hand basin, toilet bowl, shower- cabin, etc. areas, for water and wind sealing around joineries and for general purpose bonding processes.



PRODUCT CODE	PACKAGING	COLOR	BOX	PALLET
SS701	280 g / 250 ml Cartridge	Transparent	30 Pcs.	96 Box
SS711	280 g / 250 ml Cartridge	White	30 Pcs.	96 Box
SS721	280 g / 250 ml Cartridge	Black	30 Pcs.	96 Box
SS731	280 g / 250 ml Cartridge	Grey	30 Pcs.	96 Box
SS741	280 g / 250 ml Cartridge	Brown	30 Pcs.	96 Box
SS700	320 g / 280 ml Cartridge	Transparent	30 Pcs.	96 Box
SS710	320 g / 280 ml Cartridge	White	30 Pcs.	96 Box
SS720	320 g / 280 ml Cartridge	Black	30 Pcs.	96 Box
SS703	50g Blister	Transparent	24 Pcs.	96 Box

■ SHOWER CABIN SILICONE

SC700



Apel Shower cabin Silicone is a high-quality filling material and adhesive that can be used efficiently in areas which are permanently in contact with water, such as shower cabins, bathtubs, wash- hand basins. Due to its special formulation, it does not tarnish, it prevents mold, bacteria and fungi. It can be used at many places such as bathrooms, shower cabins, shower tubes, and hand-wash basins.

SPECIFICATIONS

- It has a high elongation coefficient.
- It is flexible, it does not lose flexibility after drying.
- It is water- resistant.
- It contains protectors against fungi and molds.
- It provides excellent adherence even to glossy surfaces.
- It is thixotropic.
- It does not flow down on vertical surfaces.
- It does not get dark in time.

APPLICATION AREAS

It is used for producing and assembling shower cabins, for providing leak tightness in places such as bathrooms, bathtubs, wash-hand basins, bathroom tiles which are exposed to water or humidity, and for bonding operations. It provides excellent filling and adhesion.



PRODUCT CODE	PACKAGING	COLOR	BOX	PALLET
SC700	320 g / 280 ml Cartridge	Transparent	24 Pcs.	80 Box
SC710	320 g / 280 ml Cartridge	White	24 Pcs.	80 Box

■ AQUARIUM SILICONE

AS700



Aquarium Silicone is a silicone product that does not contain any solvents and chemicals hazardous for living beings and can be used for aquarium constructions and bonding operations in glass structures.

SPECIFICATIONS

- It is 100% silicone
- It is fast curing
- After curing it is not harmful for fish and other living beings
- It has a high physical resistance and very good bonding capacity
- It is cured with the acetoxy system
- It is harmless in any environment exposed continuously to water

APPLICATION AREAS

It can be used for aquarium adhesion, leak tightness and repair operations. It can also be used in showrooms and store windows for glass bonding and sealing and as bonding and filling material applied around the aluminum doors and windows.



PACKAGING	COLOR	BOX	PALLET
310 ml Cartridge	Transparent	24 Pcs.	80 Box

■ GASKET MAKER (RTV Silicone)

GM700



Apel GM700 RTV Silicone is a high-performance silicone developed for bonding requiring high temperature resistance, for isolation, sealing, and repairing operations. It is an ideal filling for the building joints exposable to high temperatures.

SPECIFICATIONS

- It is resistant to 250°C when continuously exposed to heat and up to 300°C when instantly exposed to heat.
- It is a 100% silicone product that does not contain any solvents.
- It is cured with the acetoxy system, when cured, there forms a flexible sealing.
- It has a high resistance and a fast-curing capacity.
- After curing it becomes quite resistant to physical pressure, its flexibility is not reduced between -40°C and +250°C.
- It does not become fragile by losing volume.
- It does not crack.
- Its color is red.

APPLICATION AREAS

It is used for sealing and bonding especially in the engine area of the automobiles and other vehicles. It is used for sealing purposes in the heating systems. It can be easily used for applications requiring resistance to high temperatures, such as stove sealing, heating devices, pumps and engines, chimneys, hot water tanks, electrical household appliances, etc.



PRODUCT CODE	PACKAGING	COLOR	BOX	PALLET
GM700	310 ml Cartridge	Red	24 Pcs.	80 Box
GM710	50 g Blister	Black	24 Pcs.	96 Box



Apel Siliconized Acrylic Sealant is a water based acrylic filling material. Compared with the standard acrylic sealants, it provides a more flexible structure due to its silicone coefficient. Due to this characteristic, it reduces the cracking and rupture risk of the joints where it had been applied. While carrying all the characteristics of the acrylic sealants, its developed structure provides a more resistant and longer life filling.

SPECIFICATIONS

- It is odorless.
- It is easy to clean.
- It is flexible.
- It is resistant to UV rays.
- It contains protectors against mold and fungi.

APPLICATION AREAS

It is used for filling the gaps of construction materials such as any kind of concrete structure, wood, PVC, brick tiles, tiles, parquets, borders, etc., in the expansion gaps between the prefabricated building elements, cracks, in the little moving joints and at the joining places of any kind of woodworking with the walls.

PACKAGING	COLOR	BOX	PALLET
500 g Cartridge	White	30 Pcs.	96 Box
500 g Cartridge	Grey	30 Pcs.	96 Box
500 g Cartridge	Golden Oak	30 Pcs.	96 Box
500 g Cartridge	Black	30 Pcs.	96 Box



■ ACRYLIC LIQUID NAIL

MK200



Apel MK200 Acrylic Liquid Nail is an acrylic based single component strong adhesive that can bond many different materials in the construction sector due to its filled structure. It is used in the expansion gaps between the prefabricated building elements, for assembling the PVC, iron and aluminum frames, and at the joining places of any kind of woodworking with the painted areas, windowsills and other building materials.

SPECIFICATIONS

- It does not contain solvents and volatile gases.
- It has the capacity to fill the gaps.
- It is paintable.
- It can bond many materials of different kinds.

APPLICATION AREAS

It is used in the expansion gaps between the prefabricated building elements, for assembling the PVC, iron and aluminum frames, at the joining places of any kind of woodworking with the painted areas, windowsills and other building materials, at the joining places of any kind of aluminum roof and façade plates and of kinds of building materials, and furthermore, before painting against cracking.



PACKAGING	COLOR	BOX	PALLET
500 g Cartridge	White	30 Pcs.	96 Box

■ STYROFOAM ADHESIVE

MK250



Apel MK250 Styrofoam Adhesive is a single component acrylic assembly adhesive used for bonding and fixing the Styrofoam sheets and similar materials on the walls and other materials used for decoration in closed areas. Due to its solvent free content, it is odorless. It can be easily used in closed areas. Due to its formulation, it does not tarnish and is resistant to mold and bacteria.

SPECIFICATIONS

- It can excellently fill the gaps of and bond the rough surfaces.
- It is solvent free.
- It is paintable.
- It is odorless.
- It is resistant to fungi, mold and bacteria.

APPLICATION AREAS

It can be used for bonding to the ceiling the Styrofoam sheets used for decoration in the closed spaces, at the plinths, for all decoration works.



PACKAGING	COLOR	BOX	PALLET
500 g Cartridge	White	24 Pcs.	80 Box



Apel Chemical Anchor is a polyurethane based, single component anchor system that can be used in the construction sector for the vertical and horizontal applications of many materials such as concrete, bricks, natural stones, granite, rocks and is resistant to heavy loads due to its strong bonds. It displays high resistance due to its high quality.

SPECIFICATIONS

- Its resistance level is high.
- It is thixotropic.
- It does not flow down on vertical surfaces.
- Its color does not change.
- It can be used on concrete and stone surfaces of different dimensions and types.
- It is easily applicable.

APPLICATION AREAS

The chemical anchor is used especially in areas requiring high resistance, for mounting metal to concrete, filled bricks, gas concrete, highly perforated bricks, marble, granite and for the anchorage applications.



PACKAGING	COLOR	BOX	PALLET
571 g Cartridge	Grey	20 Pcs.	75 Box



Polyurethane Sealant is a single component sealant material that is cured in contact with the air humidity. It is resistant to humidity, water and harmful UV sun rays and does not decrease in volume by time. It has the capacity to adhere perfectly to concrete based building materials, bricks, ceramics, glass, wood, galvanized sheets, painted sheets and many plastic surfaces.

SPECIFICATIONS

- It is paintable.
- Does not flow down.
- It is thixotropic.
- Its surface is not sticky, and it does not retain dirt.
- It cures without bubbling.
- It is unshrinkable.
- It is easily applicable.

APPLICATION AREAS

It is for filling the joining places between the building elements in the construction sector, for laying down the roof tiles, for assembling the PVC window frames, filling the gaps between frames and walls during the fixing of wooden doors and windows, at the joining places of the prefabricated building elements, at the joining places of the rainwater collection roof pipes and for providing sealing for the rain gutters and for closing the space allowed for work and left open between the precast concrete blocks of the buildings.



PRODUCT CODE	PACKAGING	COLOR	BOX	PALLET
PM400	330 g Metal Cartridge	White	12 Pcs.	210 Box
PM401	330 g Metal Cartridge	Black	12 Pcs.	210 Box
PM402	330 g Metal Cartridge	Grey	12 Pcs.	210 Box
PM400S	600 ml Sausage	White	20 Pcs.	60 Box
PM410S	600 ml Sausage	Grey	20 Pcs.	60 Box
PM420S	600 ml Sausage	Black	20 Pcs.	60 Box

mitreapel® apel tutkal®

Perfect Bonding, Perfect Result



HYBRID ADHESIVES



SCAN TO WATCH THE HOW-TO VIDEO.



Apel Proseries High Tack is a single component bonding and insulation material with excellent bonding capacity, developed with hybrid technology. It can be easily used under all weather conditions for any bonding and insulation applications. It is easily used for bonding, fixing the difficult building materials without needing extra surface treatment.

SPECIFICATIONS

- Excellent first adhesion and short press time (10-15 seconds).
- Fast curing.
- It does not reduce in volume after curing, it is flexible.
- It is thixotropic.
- It does not flow down on vertical surfaces.
- It can bond many different types of materials.
- It is not affected by water, humidity and heat.
- It is paintable.
- It does not hold mold and bacteria.

APPLICATION AREAS

It is used for bonding and fixing any kinds of heavy building materials, for drilling at home and workplaces, for bonding cornices, hangers, holders, handles, etc. and many other materials without punching down. It is also used to fill the cracks, gaps, and to provide sealing and insulation at the shower cabin, windowsill, window, door edges. It can bond stone, brick, concrete, PVC, aluminum, glass, stone wool, metal, rubber, wood and many other materials of various kinds.

PACKAGING	COLOR	BOX	PALLET
290 ml Cartridge	White	12 Pcs.	210 Box
75 ml Blister	White	36 Pcs.	64 Box



■ PROSERIES CRYSTAL

H640



APEL Proseries Crystal is a single component, high quality adhesive developed with hybrid technology. It can be used without problems indoors and outdoors. It is solvents and isocyanide free. This product that can be applied to the alkaline surfaces and metals, is cured with neutral system and does not cause corrosion. It is used when extra transparent sealing and insulation materials are required, for sealing applications around glass materials, for flexible bonding applications and for general purpose bonding for home users.

SPECIFICATIONS

- It is crystal clear.
- It does not hold mold and bacteria.
- Excellent fist adhesion and short press time.
- Fast curing.
- It does not reduce in volume after curing, it is flexible.
- It is thixotropic.
- It does not flow down on vertical surfaces.
- It can bond many different types of materials.
- It is not affected by water, humidity and heat.

APPLICATION AREAS

It is used for bonding and fixing a lot of building materials, for drilling at home and workplaces, for bonding cornices, hangers, holders, handles, etc. and many other materials without punching down. It is also used to fill the cracks, gaps, and to provide sealing and insulation at the shower cabin, windowsill, window, door edges. It can bond stone, brick, concrete, PVC, aluminum, glass, stone wool, metal, rubber, wood and many other materials of various kinds.



PACKAGING	COLOR	BOX	PALLET
290 ml Cartridge	Transparent	12 Pcs.	210 Box
75 ml Blister	Transparent	36 Pcs.	64 Box

■ PROSERIES UNIVERSAL

H650



Apel Proseries Universal is a single component bonding and insulation material with excellent bonding capacity, developed with hybrid technology. It can be easily used under all weather conditions for any bonding and insulation applications. It is easily used for bonding, fixing the building materials without need for extra surface treatment.

SPECIFICATIONS

- It is crystal clear.
- It does not hold mold and bacteria.
- Excellent fist adhesion and short press time.
- Fast curing.
- It does not reduce in volume after curing, it is flexible.
- It is thixotropic.
- It does not flow down on vertical surfaces.
- It can bond many different types of materials.
- It is paintable.
- It is not affected by water, humidity and heat.

APPLICATION AREAS

It is used for bonding and fixing a lot of building materials, for drilling at home and workplaces, for bonding cornices, hangers, holders, handles, etc. and many other materials without punching down. It is also used to fill the cracks, gaps, and to provide sealing and insulation at the shower cabin, windowsill, window, door edges. It can bond stone, brick, concrete, PVC, aluminum, glass, stone wool, metal, rubber, wood and many other materials of various kinds.



PACKAGING	COLOR	BOX	PALLET
290 ml Cartridge	White	12 Pcs.	210 Box
75 ml Blister	White	36 Pcs.	64 Box

■ MIRROR & GLAZING ADHESIVE

MG740



Apel Mirror and Glazing Adhesive is a single component mirror and glazing adhesive and sealant developed with Hybrid Polymer technology, solvent and isocyanide free, with a lot of characteristics and that can reach the final adhesive capacity very quickly. It is used for bonding, fixing and sealing on any surface (smooth, porous and non-porous). It is environmentally friendly, paintable, with stable flexibility.

SPECIFICATIONS

- It does not create corrosion in mirrors.
- It does not cause color and color tone changes.
- It is solvent free and harmless for human health.
- It is produced with 100% new generation Hybrid Polymer technology.
- It is cured very fast.
- It has high elasticity.
- It is resistant to impacts and shocks.
- It does not spread unpleasant odors during and after curing.
- Excellent first adhesion and short press time.
- It does not reduce in volume after curing and is flexible.
- It is thixotropic.
- It does not flow down on vertical surfaces.

APPLICATION FIELDS

It can be used for mirror bonding, glazing assembly and for sealing and filling purposes in places where air conditioning is insufficient and odors are not accepted. It can be used for assembling glass.



PACKAGING	COLOR	BOX	PALLET
290 ml Cartridge	Transparent	12 Pcs.	210 Box

■ FLOORING ADHESIVE

H2000



Apel Parquet Adhesive is a single component adhesive with high bonding and insulation capacity, developed with hybrid technology, useable for bonding parquets and similar flooring materials. It provides acoustic and thermal insulation. It can be easily used with a trowel for floor applications.

SPECIFICATIONS

- It is easy to use.
- It has high trowel performance.
- It does not reduce in volume after curing.
- It is not affected by water, humidity and heat.
- It does not hold mold and bacteria.

APPLICATION AREAS

It is used for bonding massive and laminate parquets.



PACKAGING	COLOR	BOX	PALLET
10 kg Bucket	White	-	64 Pcs.
25 kg Bucket	White	-	27 Pcs.

mitreapel® apel tutkal®

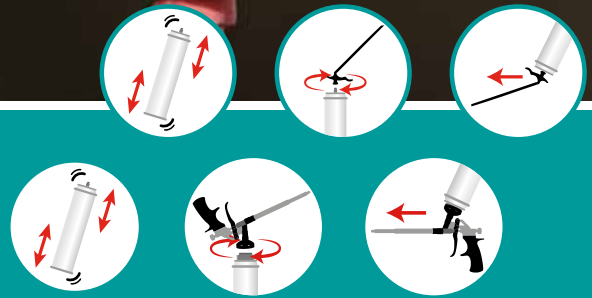
Perfect Bonding, Perfect Result



PU FOAMS



SCAN TO WATCH THE HOW-TO VIDEO.



Apel Polyurethane Assembly Foam is a single component, filling and bonding material that is cured with the humidity of the environment. While curing, it is expanding and filling the gaps.

SPECIFICATIONS

- After curing it does not expand or shrink, it is stable.
- It has excellent gap filling and bonding capacity.
- It is cured by the humidity of the air, the humidity of the environment, it speeds up the curing and provides a more rigid structure.
- It provides heat and acoustic insulation.
- The cured foam can be grinded, cut, plastered and painted.
- The cured product is impermeable and resistant to bacteriological spoilage.
- It is resistant to UV rays.
- It does not contain propellants harmful for the Ozon stratus.

APPLICATION AREAS

It is used for assembling the door and window casings, for filling the cracks, for filling purposes of the hollow structures, for the insulation of the electricity and natural gas installations, for providing insulation around the hot water pipes of the central heating systems.

PRODUCT CODE	PACKAGING	COLOR	BOX	PALLET
PF310	850 g Metal Can / Straw	Yellow	12 Pcs.	60 Box
PF311	850 g Metal Can / Gun		12 Pcs.	60 Box
PF312	650 g Metal Can / Straw		12 Pcs.	80 Box
PF321	600 g Metal Can / Straw		12 Pcs.	80 Box



■ ACOUSTIC & THERMAL INSULATION PU FOAM

PF400



APEL PF400 Acoustic and Thermal Insulation Foam is a single component polyurethane foam that provides high quality thermal and acoustic insulation in all applications. As an alternative to the more difficult applicable glass wool, stone wool and polystyrene thermal insulation sheets, it is a fast, practical and quite easy, innovative solution. It solidifies under the effect of the air humidity. It is a homogenous insulation foam with open cell structure, suitable for horizontal spraying due to its special head.

SPECIFICATIONS

- In return for the disadvantages of the traditional insulation materials that create joining places and gaps, this foam does not create any gaps and facilitates the application even in the spaces difficult to reach.
- It provides heat saving due to its excellent thermal insulation capacity.
- After application it provides acoustic insulation.
- At the end of the application there is no need for mechanical fixation such as plugging or screwing.
- It is paintable.

APPLICATION AREAS

It provides excellent adherence to all building materials. It provides high thermal insulation for materials such as metal, plasterboard, concrete, OSB panel, gas concrete, brick and stone. It can be used for exterior surfaces, attics, roofs, doors, window slopes, interior walls, floors, balconies and between building floors. Moreover, it is suitable to be used for tank insulation, boats, yachts and similar vehicles, vehicle trailers, vehicle bodies and garages.



PACKAGING	COLOR	BOX	PALLET
930 g Metal Can	Yellow	12 Pcs.	80 Box

■ DOOR & WINDOW PU FOAM

PF370



2in1
COMBO VALVE
SUITABLE FOR STRAW & GUN APPLICATIONS

Apel PF370 Door and Window Foam is a single component filling and installation foam with low expansion coefficient that is cured by the humidity of the environment. It was especially formulated for the installation of the door and window frames. Due to its reduced expansion capacity, it fills all the gaps but does not cause the shrinkage, swelling and spoilage of your frames.

SPECIFICATIONS

- It has excellent gap filling and bonding capacity.
- It is cured by the humidity of the air; the environmental humidity speeds up the curing.
- After curing the volume does not expand or reduce.
- The applied foam is expanding two times the initial volume.
- The cured foam can be grinded, cut and surface painted.

APPLICATION AREAS

It is used for assembling the door and window casings, for filling the cracks, for filling purposes of the hollow structures, for the insulation of the electricity and natural gas installations, for providing insulation around the hot water pipes of the buildings' central heating systems.



PACKAGING	COLOR	BOX	PALLET
850 g Metal Can	Yellow	12 Pcs.	60 Box

■ B2 FIRE RESISTANCE PU FOAM

PF380



APEL Fire Resistant Polyurethane Foam is a single component, self-extinguishing and fire resistant, class B2 polyurethane foam that meets the DIN EN 4102 standards, certified as class E fire retardant according to the TSE 13501 Standards. It can be used for all kinds of filling, installation and insulation applications.

SPECIFICATIONS

- It has the characteristic of delayed ignition.
- It fulfills the criteria defined for fire prevention.
- It does not expand after curing, it is stable as volume.
- It has perfect gap filling and bonding capacity.
- It is cured by the humidity of the air, the humidity of the environment, it speeds up the curing and provides a more rigid structure.
- It provides heat and acoustic insulation.
- The cured foam can be grinded, cut, plastered and surface painted.

APPLICATION AREAS

It is used for fixing the door and window casings and similar frames, for filling the gaps, for the insulation of the electrical installations and of the hot and cold-water pipes, and natural gas installations, for closing the gaps, holes and cracks. It is recommended to be used for the installation of the doors, windows and fire escape doors of service provider buildings such as hotels, hospitals, schools, campuses, shopping centers and similar ones.



PACKAGING	COLOR	BOX	PALLET
850 g Metal Can	Yellow	12 Pcs.	60 Box

■ MEGA PU FOAM

PF361



Apel Mega Foam is a single component, filling and bonding material that is cured by the environment humidity. While curing, it expands and fills the gaps. Due to its high yield and special formula, an efficiency of up to 50 – 60 liters can be reached under suitable conditions. It is economical.

SPECIFICATIONS

- High efficiency.
- Up to 50% more efficiency than the standard polyurethane foams.
- It is fast curing and has excellent filling capacity.
- It has high stability.
- After curing it does not cause the shrinkage, tension, tightening of the door and window casings.
- It can be grinded, cut, plastered and surface painted.
- It is easily applicable.
- It is resistant to UV rays.

APPLICATION AREAS

It is used for assembling the door and window casings, for filling the cracks, for filling purposes of the hollow structures, for the insulation of the electricity and natural gas installations, for providing insulation around the hot water pipes of the buildings' central heating systems.



PACKAGING	COLOR	BOX	PALLET
1000 g Metal Can	Yellow	12 Pcs.	64 Box

ADHESIVE FOAM

PF330



Apel Adhesive Foam is a single component Styrofoam adhesive that is cured by the environment humidity and is applied by special foam gun. It is used for bonding the isolation sheets such as EPS, XPS to the surface of the walls to be insulated and at the same time is used for filling applications.

SPECIFICATIONS

- After curing it does not expand or shrink, it is stable.
- It is cured by the humidity of the air, the humidity of the environment speeds up the curing.
- It provides heat and acoustic insulation.
- The cured foam can be grinded, cut, plastered and painted.
- It is resistant to UV rays.
- It does not contain propellants harmful for the Ozon stratus.
- It provides excellent bonding on different types of surfaces.
- Compared to the traditional bonding mortars, its storage and application is easy and practical.

APPLICATION AREAS

It can be used for bonding the thermal insulation sheets to different surfaces. It is used to fill the gaps between the joining places and isolation panels. It can be used for installing doors and Windows. It can be used to fill the wall cracks and for insulation applications. It can also be used to insulate the electrical and natural gas installations.



PACKAGING	COLOR	BOX	PALLET
950 g Metal Can	Blue	12 Pcs.	80 Box

POLYURETHANE FOAM

PF210



Apel Polyurethane Assembly Foam is a one-component adhesive and filler material that cures by reacting with moisture in the air. It is specifically formulated for filling large gaps.

SPECIFICATIONS

- Does not change in volume after curing; retains its stable structure.
- Suitable for use in wide gaps.
- Cures with ambient moisture; higher humidity accelerates curing and results in a harder structure.
- Provides thermal and sound insulation.
- Cured foam can be easily trimmed, cut, plastered, and painted.
- Waterproof and resistant to mold and bacterial growth.

APPLICATION AREAS

Preferred for the installation of door and window frames and for filling cracks and gaps. It can also be used for insulation of electrical and natural gas installations, and for thermal insulation around hot water pipes in radiator and boiler rooms.



PRODUCT CODE	PACKAGING	COLOR	BOX	PALLET
PF210	840 g Metal Can / Straw	Yellow	12 Pcs.	60 Box
PF212	600 g Metal Can / Straw		12 Pcs.	60 Box

apel®

BONDS
FIXES
INSULATES



mitreapel[®] apel[®]tutkal[®]

Perfect Bonding, Perfect Result



TECHNICAL AEROSOLS



SCAN TO WATCH THE HOW-TO VIDEO.



APEL BK40 is a multi purpose spray that prevents corrosion of materials with metal parts, is protective, keeps away humidity, lubricates and cleans rust, and solves mechanic stiffness. It is not affected dust, dirt and similar by external elements.

SPECIFICATIONS

- It stops squeaking.
- It can easily get to hard-to-reach places with its special pipette.
- It provides very good penetration.
- It does not contain silicone.
- It keeps away humidity.
- It cleans and protects.
- It removes rust.
- It facilitates the removal of grease.

APPLICATION AREAS

It is used for greasing the engine chains, the nuts and bolts, the parts that cannot move because of rust and dirt, for the long term protection processes against corrosion and rust by keeping away the humidity from the metallic surfaces, for cleaning the rusty and corroded surfaces by penetrating the rusty and dirty surface, for cleaning clogged grease and dirt of the hoods and aspirators, for stopping the squeaking created by the metallic friction of the door and cabinet hinges. It is used to solve all kinds of mechanical stiffness.

PACKAGING	COLOR	BOX	PALLET
200 ml Metal Can	Transparent	24 Pcs.	96 Box
400 ml Metal Can		24 Pcs.	64 Box



SEALING SPRAY

BK70



Apel BK70 Sealing Spray is a rubberized protective coating used for preventing leakages, filling cracks and providing sealing. It provides impermeability on walls, asphalt, roofing materials, and other materials such as aluminum, PVC, Vinyl facades, fiberglass and is like a flexible seal for them.

SPECIFICATIONS

- It provides perfect closure.
- It is not affected by water and humidity.
- Its curing is fast.
- It spreads homogenously on the surface.
- It is heavy- duty.

APPLICATION AREAS

It can be used on materials such as walls, asphalt, roofing materials, aluminum, metal, PVC, Vinyl facades, fiberglass. It can be applied by spraying directly on the cracks and gaps.



PACKAGING	COLOR	BOX	PALLET
500 ml Metal Can	Transparent	12 Pcs.	49 Box

WELDING SPRAY - ANTI-SPATTER

BK50



Welding Spray, it prevents sticking of the welding slags to the surface during welding. Due to its high surface protection level, it extends the metal lifetime. Due to its silicone free formulation, if desired, it can be painted after application.

SPECIFICATIONS

- It is paintable.
- It is silicone free.
- It provides permanent protection.
- It protects your machine.
- It is ready to use.
- Its application is easy.

APPLICATION AREAS

It is used during the welding process to prevent the welding slags from sticking to the welding machine and to the surface.



PACKAGING	COLOR	BOX	PALLET
400 ml Metal Can	Transparent	24 Pcs.	64 Box

■ MOLD RELEASE - LUBRICANT

BK30



Apel BK30 Mold Release Spray is a silicone based lubricant aerosol spray that prevents the bonding of materials to the molds.

SPECIFICATIONS

- It has excellent releasing and lubricating capacity.
- Due to its silicone content, it secures application at high temperatures.
- It does not leave any residues on the surface.

APPLICATION AREAS

In plastic, rubber and similar industrial fields, it prevents the bonding of the material during the injection or molding processes and facilitates its release from the mold.



PACKAGING	COLOR	BOX	PALLET
400 ml Metal Can	Transparent	24 Pcs.	64 Box

■ BRAKE CLEANER

BK20



Apel BK20 Brake Cleaner provides cleaning the brake hydraulic, grease and other oils which, in combination with dust, cause dirty and slippery conditions in the brake systems of the motor vehicles.

SPECIFICATIONS

- It is volatile and does not leave residues.
- It does not contain halogen solvents or acetone, which are harmful for human health.
- Due to its special spraying system, it can be applied upright, inverted or horizontally.

APPLICATION AREAS

Due to its special brake cleaner formulation, it is used to clean quickly and efficiently the grease layers formed in combination with dust on the surface of metallic parts such as brake pads, drums, cylinders, discs, springs, calipers and brackets of the brake systems. By cleaning the grease and dust from the surface of the brake pads, it provides more traction capacity.



PACKAGING	COLOR	BOX	PALLET
500 ml Metal Can	Transparent	24 Pcs.	56 Box

■ PENETRATING OIL

BK10



Apel BK10 Penetrating Oil is an aerosol used to remove rust, to protect and lubricate. Due to its practical usage, it can be used by spraying directly on the rusty surface.

SPECIFICATIONS

- It provides anticorrosion and antirust protection by eliminating the humidity from the metallic surfaces.
- Due to its MoS2 content, it provides protection by reducing friction even under vibration and power at high temperatures.
- Due to its perfect surface- spreading, it provides integrated protection.

APPLICATION AREAS

This dust removing aerosol, due to its MoS2 content, while facilitating the cleaning of rust from the surface, protects the surface by lubricating it. It is used to facilitate by lubrication the movements of the rusty chains, nuts and bolts, valves, screws, door/ cabinet locks and hinges which were reduced by rust and dirt.



PACKAGING	COLOR	BOX	PALLET
200 ml Metal Can	Yellow	24 Pcs.	96 Box

■ PU FOAM CLEANER

TA300



Apel PU Foam Cleaner is used to clean the uncured residues of APEL PU Foam from the undesired places of the application area. It is sprayed directly on the foam and the stains are cleaned by rubbing with a clean piece of cloth.

SPECIFICATIONS

- It is practical.
- It is ready to use.
- It cleans easily the stubborn PU foam remains.
- It does not leave any residues.

APPLICATION AREAS

It is used to clean the PU foam remains stuck to undesired places, to soften the adhesives, and to clean the valves of the PU foam cans.



PACKAGING	COLOR	BOX	PALLET
500 ml Metal Can	Yellow	24 Pcs.	56 Box

■ HIGH GLOSS SHINER & CLEANER

TA200



Mitreapel High Gloss Surface Polisher cleans the glossy surface coating of your home and office furniture without harming the surfaces. It refreshes your room with its pleasant fragrance.

SPECIFICATIONS

- It is practical and economical.
- It helps to restore the shiny look of your kitchen cabinets and domestic appliances .
- It has a pleasant natural pine fragrance.

APPLICATION AREAS

It is used for kitchen cabinets and cabinet doors, automobiles dashboards and consoles, glossy surfaces, and furniture coatings.



PACKAGING	COLOR	BOX	PALLET
200 ml Metal Can	Transparent	24 Pcs.	96 Box

■ ADHESIVE CLEANER

TA100



Apel Adhesive Cleaner softens and cleans the adhesive residues formed after application and which are stuck to undesired places. It is ready to use and should be sprayed directly on the adhesive.

SPECIFICATIONS

- It is practical and efficient.
- It should be used in well ventilated spaces because it contains solvents.
- The place should be ventilated after application.
- It should be sprayed on the undesired adhesive from a distance of 25 cm and then wiped with a clean piece of cloth by rubbing in circular movements.

APPLICATION AREAS

It is used to clean the cyanoacrylate-based adhesives. It is also used to remove and clean sticky labels and label residues from the surfaces.



PACKAGING	COLOR	BOX	PALLET
200 ml Metal Can	Transparent	24 Pcs.	96 box

mitreapel® **apel tutkal®**

Perfect Bonding, Perfect Result



PUR HOTMELT ADHESIVES

PUR HOTMELT ADHESIVES FOR FLAT LAMINATION

The panel industry is being reshaped with the **PURFact**[®] series reactive polyurethane adhesives.

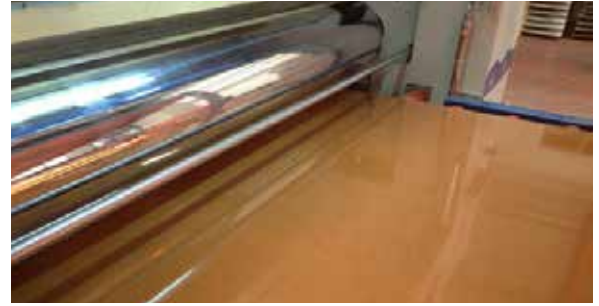
It has been painstakingly formulated in our modern R&D Center for all of your processes. Feel the high quality in your production with **PURFact**[®] Reactive hotmelt series adhesives, which are carefully developed by taking customer experiences, feedback and field studies into consideration.



PURFact[®] which is optimized for all weather conditions with its very high humidity and temperature resistance and is suitable for many different types of foil combinations, offers an irreplaceable adhesive experience with its different variations.

PURFact® 101 Series - Flat Lamination

New generation **PURFact® 101** and **PURFact® 103** is recommended for surface laminations. It can be applied on surfaces such as wood, MDF, chipboard, aluminum, steel, GRP, PC. **PURFact® 101**, the roller applicator of which is specially developed for machines, is used for smooth applications on PVC, ABS, PET, PMMA and PC type foils.



PURFact® 102 has been developed as suitable to use in machines with nozzle application type. Due to its perfect surface wetting and homogeneous distribution, it spreads evenly and ideally on the entire surface of the panel. Thus, it ensures that thermoplastic foils have equal adhesion strength on the entire surface of the panel. Just like **PURFact® 101**, it is compatible with foils with different properties such as PVC, ABS, PET, PMMA. Common properties of **PURFact® 101**, **PURFact® 102** and **PURFact® 103** adhesives;

- Very high heat-opening resistance,
- Very high moisture and water resistance,
- Compatibility with roller and slot nozzle machines,
- The ability to adhere to many different materials,
- Ideal for situations where very high adherence is required.



PURFact® 141 Series - Edge Banding

		PURFact® 141.02
Application Temperature (°C)		120 - 140
Softening Temperature (°C)		65 ± 5
Viscosity (mPas)	120°C	65.000 ± 15.000
	130°C	60.000 ± 10.000
	140°C	55.000 ± 5.000
Density (g/cm³)		1,10
Open Time 25°C (Minute)		1
Color		Transparent

Different types of Edges such as veneer, PVC, ABS are being used to decorate open wooden corners of panels after being resized according to customer needs. There are few adhesive options to bond edges to panel but PUR Hotmelt is the best superior option to stick edges to wood in terms of durability, resistance, performance and visual appeal. That is why we developed **PUR Fact® 141** series in order to provide the best bonding experience for edge banding application. Commercially, there is only one type of PUR Fact option in Beta Kimya which has low viscosity to lower heat needs on machine. However, its open time and bonding strength before and after curing fulfills customer's needs.



PURFact® FLAT LAMINATION FAMILY FOR THE WOODEN FURNITURE SECTOR

		PURFact® 101.00	PURFact® 101.10	PURFact® 101.20	PURFact® 101.30	PURFact® 102.00	PURFact® 103.00	PURFact® 103.10
Application Temperature (°C)		120 – 140	120 – 140	120 – 140	120 – 140	120 – 140	120 – 140	120 – 140
Softening Temperature (°C)		55 ± 5	55 ± 5	55 ± 5	55 ± 5	55 ± 5	55 ± 5	55 ± 5
Viscosity (mPas)	120°C	25.000 - 40.000	25.000 - 40.000	15.000 - 25.000	15.000 - 35.000	35.000 - 45.000	14.000 - 20.000	25.000 - 45.000
	130°C	20.000 - 30.000	20.000 - 30.000	10.000 - 20.000	10.000 - 20.000	20.000 - 30.000	8.000 - 12.000	20.000 - 30.000
	140°C	15.000 - 25.000	15.000 - 25.000	5.000 - 15.000	7.000 - 13.000	15.000 - 25.000	4.000 - 8.000	10.000 - 20.000
Density (g/cm³)		1,10	1,10	1,10	1,10	1,10	1,10	1,10
Open Time 25°C (Minute)		4-7	3-6	3-4	1-2	1-2	8-15	4-7
Lamination Surfaces		Wooden Surfaces such as MDF, Chip-board, Plywood	Wooden Surfaces such as MDF, Chip-board, Plywood	Wooden Surfaces such as MDF, Chip-board, Plywood	Wooden Surfaces such as MDF, Chip-board, Plywood	Wooden Surfaces such as MDF, Chip-board, Plywood	Wooden Surfaces such as MDF, Chip-board, Plywood	Wooden Surfaces such as MDF, Chip-board, Plywood
Foil Types		PVC, PET, ABS, PMMA, PC	PVC, PET, ABS, PMMA, PC	PVC, PET, ABS, PMMA, PC	PVC, PET, ABS, PMMA, PC	PVC, PET, ABS, PMMA, PC	PVC, PET, ABS, PMMA, PC	PVC, PET, ABS, PMMA, PC



PURFact® 121 Series - Profile Wrapping

PURFact® 121 family are reactive polyurethane profile wrapping adhesives. It is a type of hot melt adhesive that is melted at the specified temperatures in fully auto-feed profile wrapping machines and semi-automatic machines. Industrial type adhesives for wrapping all kinds of profiles (baseboards, sill, cover, cabinet, lath etc.) made of MDF with decorative foils and papers such as PVC, ABS, HPL, laminate. It reacts with moisture in the air and in the material and gives successful results in primed and non-primed materials. Due to its high initial adhesion strength, it does not come loose from the surface it is attached to. After the reaction process is completed, it creates a permanent hold.

It provides a very strong adhesion with less consumption on the intricate corners and radial edges of the profiles.

The product whose reaction is completed forms a smooth surface. The coated profile is resistant to moisture, water, heat and corrosive effects.

PURFact® series reactive hotmelt adhesives, which are tested in many different machines and environment conditions, offer the most ideal formula and allow you to get the most ideal result by adapting to your working environment and machine.

PURFact® 121.10 and **PURFact® 121.11** Profile Wrapping Adhesives, which offer options such as long and short open time, are among the options you can choose for an efficient and high quality production.

For detailed information, please visit www.purfact.com.



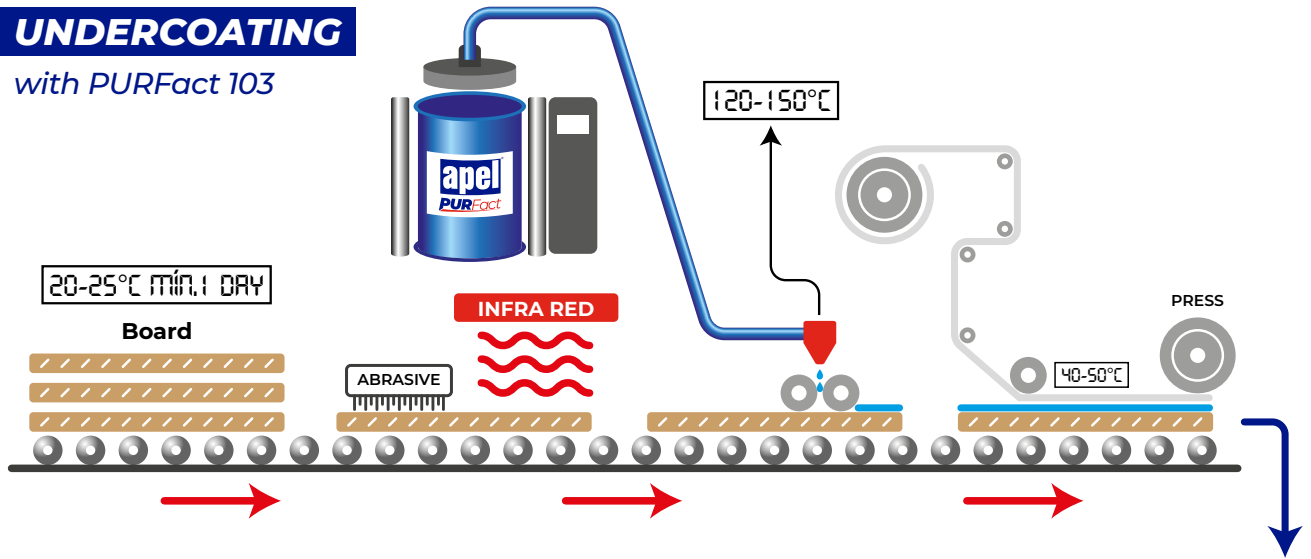
PURFact® PROFILE WRAPPING FAMILY

		PURFact® 121.09	PURFact® 121.10	PURFact® 121.11
Application Temperature (°C)		120 – 140	120 – 140	120 – 140
Softening Temperature (°C)		55 ± 5	55 ± 5	55 ± 5
Viscosity (mPas)	120°C	30.000 - 40.000	30.000 - 40.000	30.000 - 40.000
	130°C	20.000 - 30.000	20.000 - 30.000	20.000 - 30.000
	140°C	15.000 - 25.000	15.000 - 25.000	15.000 - 25.000
Density (g/cm³)		1,10	1,10	1,10
Open Time 25°C		5-15 Seconds	20-40 Seconds	2-3 Minutes
Lamination Surfaces		Wooden Profiles such as Door Jambs, Skirting, Wooden Door Frames	Wooden Profiles such as Door Jambs, Skirting, Wooden Door Frames	Wooden Profiles such as Door Jambs, Skirting, Wooden Door Frames
Foil Types		PVC, PET, ABS, PMMA, Decorative Papers	PVC, ABS, PMMA, Decorative Papers	PVC, ABS, PMMA, Decorative Papers

FLAT LAMINATION APPLICATION SCHEME

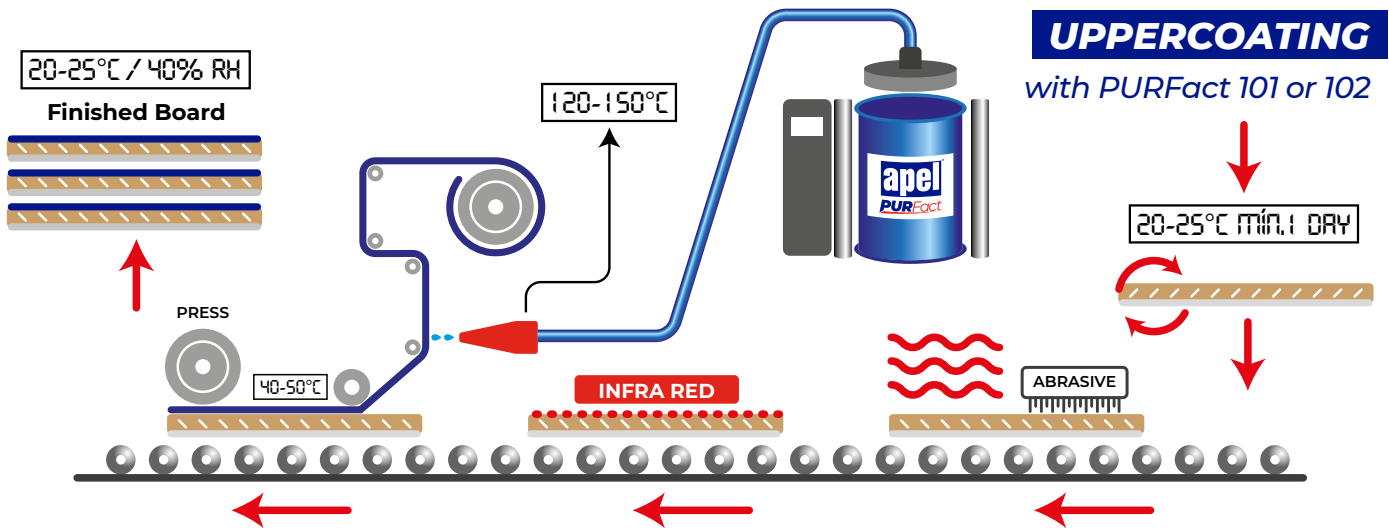
UNDERCOATING

with PURFact 103



UPPERCOATING

with PURFact 101 or 102



mitre apel® apel tutkal®

In every detail
of buildings & constructions...





www.betakimya.com.tr

*“Perfect Bonding,
Perfect Result”*



mitreapel® **apel**tutkal®

Yeşilköy Mah. Atatürk Cad. EGS Business Park B3 Blok, Kat 13 Bakırköy / İstanbul / Türkiye
Tel: +(90) 212 670 43 00 Pbx Fax: +(90) 212 670 43 53

www.betakimya.com.tr